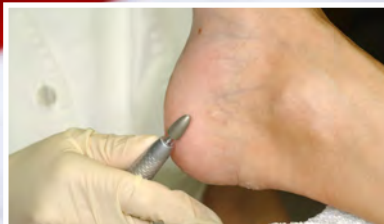


# ▶ **PODIATRY** INNOVATIONS

▶ Performance Instruments   ▶ Precision Tools   ▶ Essential Accessories



*ENGINEERED SOLUTIONS - POWERED BY:*

**hadewe**  
beauty & medical equipment

THOMAS MACHINERY LTD.  
**Rotatool**

**acurata**  
rotating instruments

**North America Sales 1.800.361.3079 sales@helius40.com www.helius40.com**

Imported by: Pan-Tec Div. of Thomas Machinery Limited 5 - 31 Arrow Road, Guelph, ON, N1K 1S8 Canada

# ▶ AURORIA THE NEWEST GENERATION

**hadewe**  
beauty & medical equipment



The New line of HADEWE units is setting a new standard for podiatry drills.

## SILENT, LOW-WEIGHT, RELIABLE, SUPERIOR

Auroria is equipped with a programmable memory and a light on the handpiece. The new HADEWE units have a **Brushless Suction Motor**, which is not only very silent, but also much lower in weight. Auroria is a pleasure for your ears and your back when working with it.

TECHNOLOGY
Speed: 6.000-40.000 rpm
Maintenance-free Brushless Suction Motor
Modern, easy-to-clean membrane keyboard
Extra large speed display
Displays information about: speed/left right direction, Suction level, date and time, filter change and date of last inspection
3 preferred speed steps saved and called via program mode
Regular and reverse switch (left/right)
Works only with Micro Filter RT-H5179

TECHNICAL DATA
Size: W 273 x H 142 x D 235 mm (W 11" x H 5½" x D 9¼")
*excludes exterior parts attached
Suitable for all Hadewe carrying cases
Total weight: 2.7 kg (6 lbs)
Noise level: 49 db (55 db at full throttle)

HAND PIECE FEATURES
Powerful LED-light at the top of the hand piece
Maintenance-free, Brushless Hand Piece Motor
Patented Power Clamping System
High torque, low vibration, silent running
Suitable for all common burs of Ø 2.35 mm (3/32")
Two-fold sealing of the ball bearings
Hand Piece: Ø ¾"-1", length: 5¾", weight: 5.29 oz

There is a **Smart Key** at the bottom of the hand piece, which allows fast access to important functions. You can easily switch between preset speeds by pressing the key once, or turn the whole unit on/off by keeping it pressed.



The knob of the **Quick Chuck Device**, which allows you to change the tools easily and securely, has been made of TPE (*thermoplastic elastomer*). TPE is a soft material that makes it comfortable to use the knob.



There is a **Light Source**, which is directly implemented at the hand piece, and which allows for ideal work conditions even when the external light sources are insufficient.



**ORDERING IS EASY - FAST, DIRECT SHIPPING**

▶ **1.800.361.3079**  
sales@helius40.com www.helius40.com

# ▶ VELORIA THE STRONG, SILENT TYPE

**hadewe**

beauty & medical equipment



Veloria is our 1st New-Designed Unit, and is equipped with a **Brushless Suction Motor**, which is not only very silent, but also much lower in weight.

## TECHNOLOGY

- Speed: 6.000-40.000 rpm
- Maintenance-free Brushless Suction Motor
- Modern, easy-to-clean membrane keyboard
- Extra large speed display
- Regular and reverse switch (left/right)
- Works only with Micro Filter RT-H5179

## TECHNICAL DATA

- Size: W 273 x H 142 x D 235 mm (W 11" x H 5½" x D 9¼")
- \*excludes exterior parts attached
- Suitable for all Hadewe carrying cases
- Total weight: 2.7 kg (6 lbs)
- Noise level: 49 db (55 db at full throttle)

## HAND PIECE FEATURES

- Maintenance-free, Brushless Hand Piece Motor
- Patented Power Clamping System
- High torque, low vibration, silent running
- Suitable for all common burs of Ø 2.35 mm (3/32")
- Two-fold sealing of the ball bearings
- Hand Piece: Ø ¾"-1", length: 5¾", weight: 5.29 oz

# ▶ HELIUS40 THE PROVEN PERFORMER

**hadewe**

beauty & medical equipment

Hadewe's Helius40 is immensely popular due to the easy handling of the unit. The suction is very powerful, while an integrated labyrinth technology keeps the noise level under 59 db A.

The Helius40 Hand Piece motor has been constructed for long working hours, and the skin particles are removed via the effective point suction at the top of the hand piece. This allows for optimal hygienic and effective work which is required by podiatrists.



## TECHNOLOGY

- Speed: 6.000-40.000 rpm
- Sound Proofing < 59dbA
- Modern, easy-to-clean membrane keyboard
- Large speed display
- Regular and reverse switch (left/right)
- Uses Paper Filter Bags RT-H515 or Micro Filter Bags RT-H5179

## TECHNICAL DATA

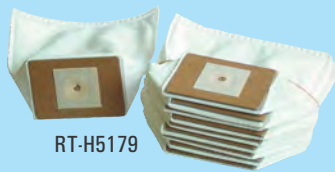
- Size: W 273 x H 142 x D 186 mm (W 11"x H 5½" x D 7¼")
- \*excludes exterior parts attached
- Suitable for all Hadewe carrying cases
- Total weight: 4.0 kg (8.8 lbs)

## Hand Piece Features:

- Patented Power Clamping System
- High torque, low vibration, silent running
- Suitable for all common burs of Ø 2.35 mm (3/32")
- Two-fold sealing of the ball bearings
- High Torque, low-vibration, silent running
- Hand Piece: Ø ¾"- 1", length: 6½", weight: 4.86 oz

# CHANGING THE FILTER

Check frequently the status of your filter. In the Auroria Model, as soon as the display shows that a filter change is required, you only need to open the hatch at the side of the unit to replace the filter with a new one. The filter chamber is easily accessed and can be comfortably opened thanks to the magnet holders in the door. The Micro Filter Bags RT-H5179 are classified as class M filters by the BIA (Germany's Health & Safety Institute for the work environment) meaning they have a dust retention capacity of 99.9%.



RT-H5179



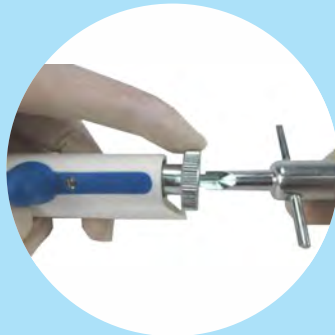
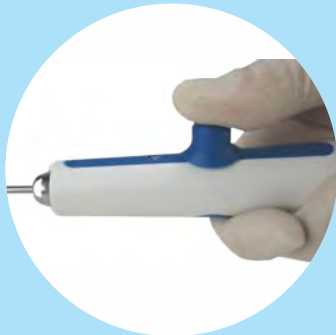
RT-H515



*\*Please note that the conventional Paper Filters RT-H5115 are NOT to be used in either Auroria or Veloria, only in Helius40.*

# CLEANING THE CHUCK

A simple and fast maintenance of the most basic components is one of the important qualities of the Hadewe hand pieces. The whole procedure takes less than one minute to complete.



- Loosen the top of the hand piece, and then turn out the chuck. The chuck can be easily removed with the spanner tool delivered with every unit.
- Now clean the inside of the hand piece and the top with a dry brush.
- For opening the chuck, regardless of the Hadewe Unit you have, push the button forward.
- Set the screw spanner (wrench) on the axle and hold it tight. Now use the front of the second spanner to unscrew the chuck.
- Cleaning the chuck: Soak the chuck in ethyl alcohol or a special cleaning liquid for tools. Clean the slits and the hole of the chuck with a dry scrubber or brush. Rinse the chuck very well, and make sure you let it dry well afterwards. Cover your index finger with a very little amount (just a drop) of oil and rub in between your thumb and index finger. Now dab off the oil until your finger is only covered with a very thin film of oil. Then, move the chuck between your thumb and pointer. There should be only a very thin film of oil left on the chuck. *Please follow this saying: Less is more!*
- To assemble the chuck follow the steps in reverse order. Make sure that the chuck is opened during the assembly (the hand piece button must be in forward position), and is firmly applied afterwards.

# PRECISION THE RIGHT TOOLS MATTER

EXPLORE THE BIG WORLD OF SMALL INSTRUMENTS

## ▶ ROTATOOL BURRS TiAIN - AC-BLUE LINE

Quick removal of thick gryptic nails and callus, treatment of orthosis silicones and hyperkeratosis.

*Characteristics:* Very high durability and removal rate, easy cleaning and longer service life, no heat development.



## ▶ ROTATOOL BURRS XC / COARSE / MEDIUM

Are ideal for podiatry work to quickly reduce & smooth out unattractive nails.

Strong removal of wooden nails, super coarse removal rate, Coarse shaping of nails, coarse removal rate, Removal of callus, designing of fungal infected nails, medium removal nails rate.

*\*These precise instruments are only to be used by trained Foot Care Professionals.*



## ▶ ROTATOOL BURRS LSQ

Quick removal of thick gryptic nails and callus, treatment of orthosis silicones and hyperkeratosis, high removal rate.



## ▶ ROTATOOL BURRS LGQ & NEQ

**LGQ:** Quick removal of thick gryptic nails and callus treatment of orthosis silicones and hyperkeratosis, very high removal rate.

**NEQ Ball Cutter** *Characteristics:* All diameters have 8 blades, very sharp and effective. Treatment of corns and nail mycosis, removal of calluses.



## ▶ ROTATOOL BURRS PATENTED NEM & TREPINE

**NEM** - Quick removal of callus, smoothening and designing of fungal infected nails. Treatment of cuticle and nail fold. Recommended for diabetics.

*Characteristics:* Coarse and fine segments on one cutter, this means unmatched cutting performance together with smooth surfaces, very smooth running, long service life and especially gentle for the patient.

**TREPINE** - Removal of corns and calluses, removal of cornea



## ▶ ROTATOOL DIAMONDS

Work on calluses & corns more efficiently than with traditional files. Smaller diamonds help to bring bent nails back to form, eliminating pressure and improving shape. These tools also eliminate difficult corners & edges, and easily remove unwanted material from under the front of nails. (Different grits available.)



## ▶ ROTATOOL DIAMONDS XPRT

Are ideal for podiatry work to quickly reduce & smooth out unattractive nails. They can also be used to clean heels and remove hard calluses.

(Different grits available.)



Can't find the tool you're searching for?

Browse our selection online at:

[www.helius40.com](http://www.helius40.com)



▶ SALES, CONSULTATION & TRAINING FOR SPECIFIC TOOLS IS AVAILABLE BY CALLING 1-800-361-3079

# ▶ PACK IT UP YOU'RE READY TO GO

CASES & SOLUTIONS TO TAKE YOUR PRACTICE ON THE ROAD



**RT-H0654 Blue Case**

- ▶ Thermoplastic housing made out of ABS (Acrylonitrile butadiene styrene) polymer, which is impact resistant, easy-to-clean & resistant against most disinfection fluids.
- ▶ Two drawers provide substantial space & allow a clear and proper way to order your work tools and instruments.
- ▶ Drawers can be removed from the case to keep them closer to your work operation.
- ▶ Padded hand piece holder inside the case for safe transport.
- ▶ The carrying case features sturdy rollers and an extendable, telescopic arm.



**RT-H0909 Black Case**

- ▶ The Hadewe carrying cases are suitable for all current Hadewe units.
- ▶ You can comfortably work from "out of the case" since the doors open sideways. And you also have additional space for your tools!
- ▶ The cases feature reinforced wheels, an extractable telescopic carrying handle, an easy-to-clean synthetic leather surface inside, and a very handy document folder in the lid.
- ▶ The podiatry drills in all Hadewe cases are secured with hook and loop straps.



**RT-H0910 Gray Compact Case**

- ▶ This carrying case is ideal for mobile podiatry due to its wheels and telescopic extraction handle.
- ▶ It has reinforced protection at the corners, and the inside is also covered by a washable and easily cleaned synthetic leather.



**Foot Rest RT-H0912**

- ▶ The footrest is perfect for use during home visits, and assists you in putting the patient's foot where you can best work on it.
- ▶ It comes with a carrying bag (W 690 x H 320 x D 240 mm) (W 9½" x H 27" x D 12½")
- ▶ Light weight of 1.1 kg (2.42 lbs)
- ▶ Height (between 46-67 cm / 18-26 inches) and multiple angles are separately adjustable.
- ▶ The joints are extra steel reinforced to prevent breaking under weight.



**RT-H3670 (Blue) Basin  
RT-H3508 (White) Basin**

- ▶ New flexible catch basin. Consisting of a disinfected elastic material.
- ▶ Provides a soft basis to put your patient's leg on, and can easily be pressed down, when working on the heel.
- ▶ Excess spray water will be collected in the basin.
- ▶ The Flex Catch Basin can be rolled together for mobile transport and also fits into our carrying cases, or the bag of the foot rest.
- ▶ Size: W 330 x H 100 x D 510, Weight: 580 g (W 13" x H 4" x D 22¾", Weight: 1.28 lbs)



**Tool Tray RT-H0219**

- ▶ This hard plastic tray allows you to keep all your tools and instruments within reach. You can hang it on the footrest and it can be turned 360° in all directions.
- ▶ The tray consists of hard to break plastic, and is resistant against disinfection liquid.
- ▶ Includes 2 tool trays and 1 holder.
- ▶ Size: W 260 x H 75 x D 360, Weight: 400 g (W 10¼" x H 3" x D 14", Weight: 14 oz)

Distributed by:

**hadewe**  
beauty & medical equipment

THOMAS MACHINERY LTD.  
**Rotatool**

**acurata**  
rotating instruments

ORDERING IS EASY - FAST, DIRECT SHIPPING

▶ **1.800.361.3079**

sales@helius40.com www.helius40.com